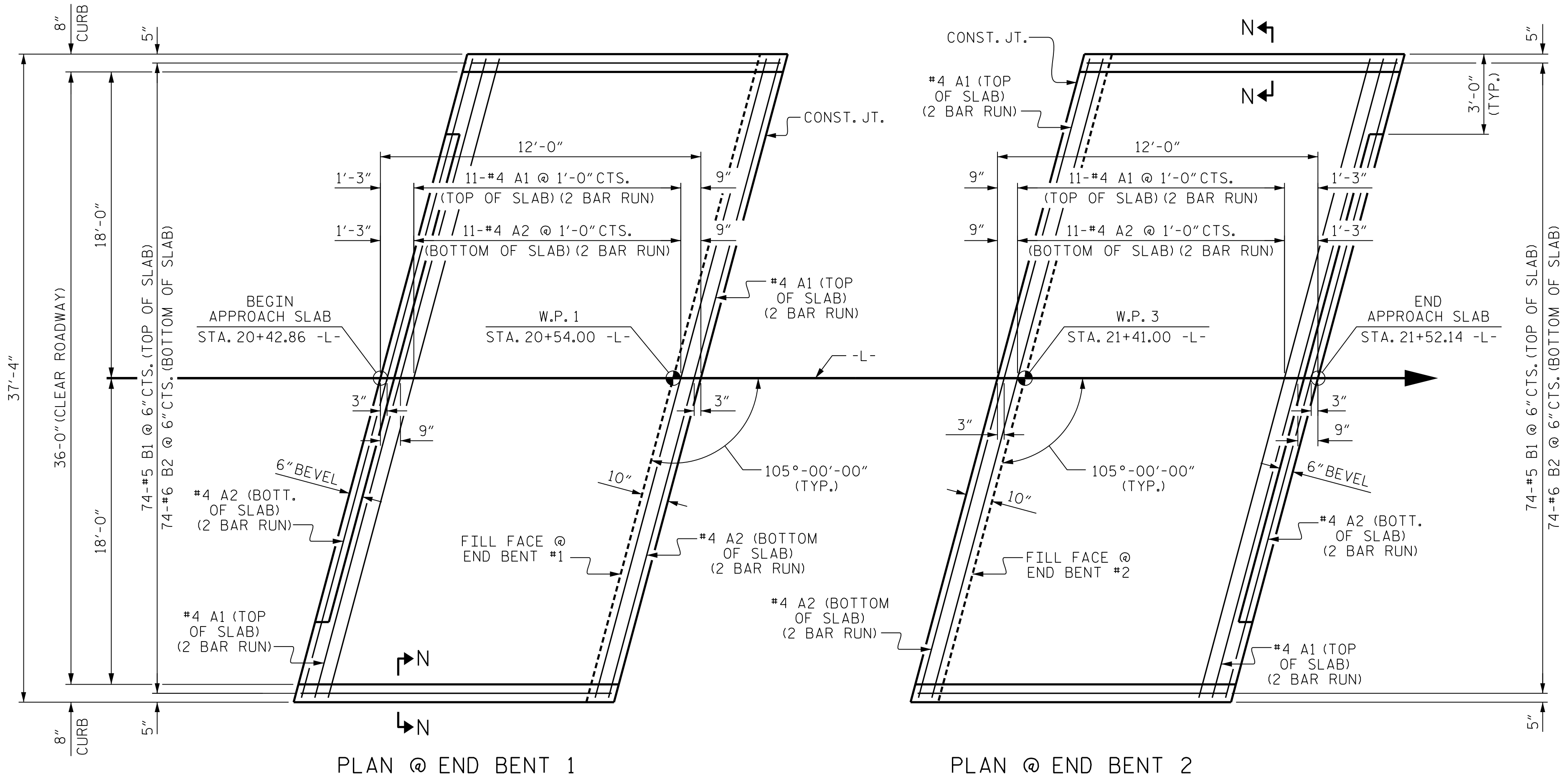


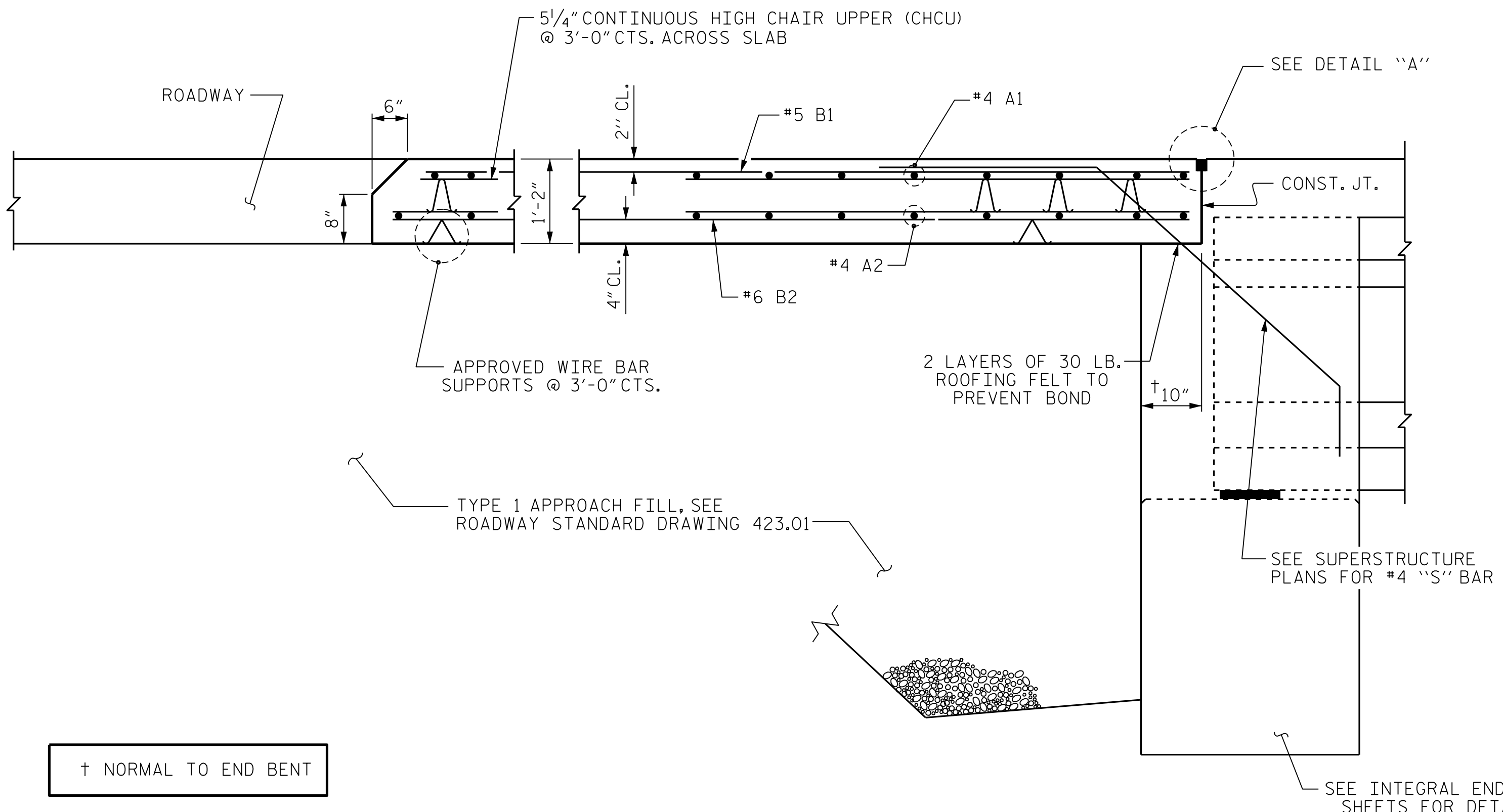
5/7/2025 7:26:08 PM User: blanning
Filename: N:\NC Bridges\W3001.02_Polk 29\BP14-R041\Structures\01_055_BP14-R041_SMU_ASI_740029.dgn



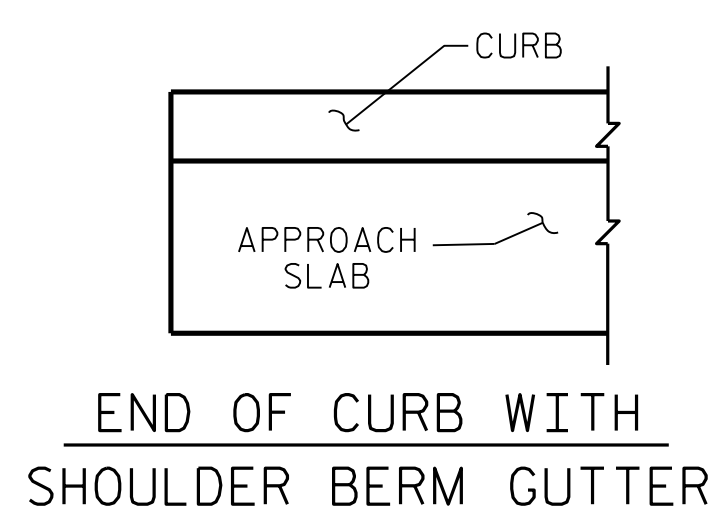
PLAN @ END BENT 1

PLAN @ END BENT 2

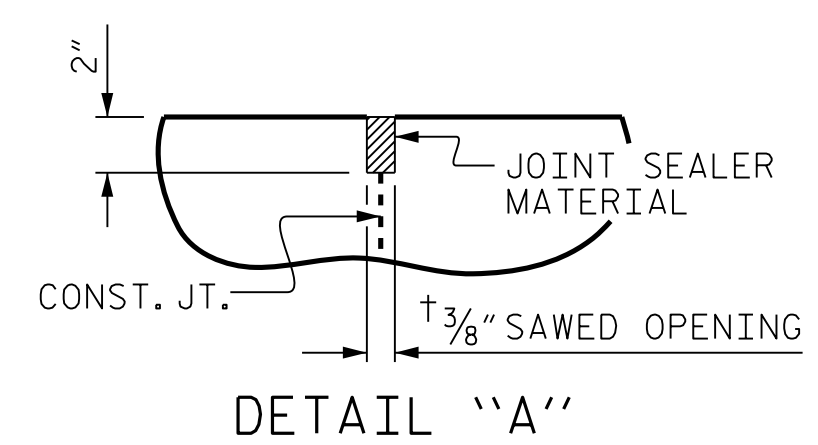
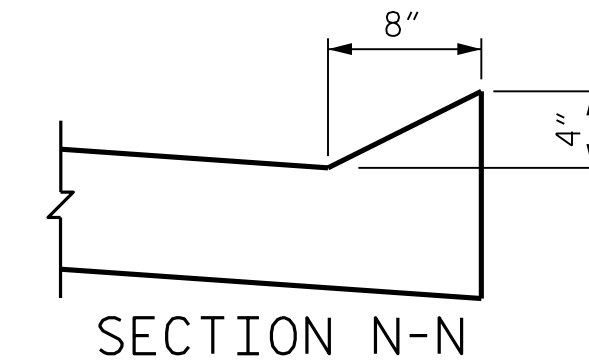
DIMENSIONS SHOWN ARE TYPICAL FOR BOTH APPROACH SLABS



SECTION THRU SLAB

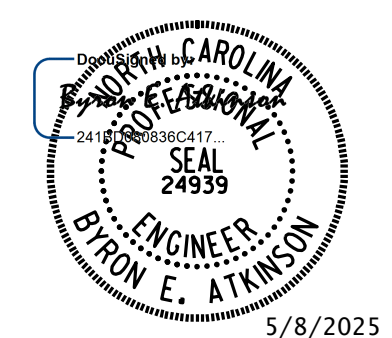


CURB DETAILS



**DOCUMENT NOT CONSIDERED FINAL
UNLESS ALL SIGNATURES COMPLETED**

MI ENGINEERING
1011 SCHAUB DRIVE, SUITE 100
RALEIGH, NC 27606
(919) 851-6606
FIRM PE NUMBER : P-0671



BILL OF MATERIAL					
FOR ONE APPROACH SLAB (2 REQ'D.)					
BAR	NO.	SIZE	TYPE	LENGTH	WEIGHT
* A1	26	#4	STR	20'-2"	350
A2	26	#4	STR	20'-1"	349
* B1	74	#5	STR	11'-1"	855
B2	74	#6	STR	11'-7"	1287
REINFORCING STEEL				LBS.	1636
* EPOXY COATED REINFORCING STEEL				LBS.	1205
CLASS AA CONCRETE				C. Y.	19.3

SPLICE LENGTHS		
BAR SIZE	EPOXY COATED	UNCOATED
#4	1'-11"	1'-7"
#5	2'-5"	2'-0"
#6	3'-7"	2'-5"

PROJECT NO. BP14.R041
POLK COUNTY
STATION: 20+97.50 -L-

SHEET 1 OF 2

STATE OF NORTH CAROLINA DEPARTMENT OF TRANSPORTATION RALEIGH					
BRIDGE APPROACH SLAB FOR INTEGRAL ABUTMENT WITH FLEXIBLE PAVEMENT					
REVISIONS					
NO.	BY:	DATE:	NO.	BY:	DATE:
1			3		
2			4		
SHEET NO. S-28					TOTAL SHEETS 29

DRAWN BY : B.E. LANNING DATE : 03/25
CHECKED BY : B.E. ATKINSON DATE : 03/25
DESIGN ENGINEER OF RECORD : B.E. ATKINSON DATE : 04/25